



**Perth**  
 86 Furniss Road, Landsdale, WA 6065  
 Phone: 08 9302 3686 | Facsimile: 08 9200 5673

**Sydney**  
 56 Bay Road, Taren Point 2229, NSW  
 Phone: 02 9524 2003 | Facsimile: 02 8072 1303



## CHOICES IN GLASS BALUSTRADE

**USING STANDOFF PINS**

and slotted tube



and handrail brackets



and SGP glass



and timber



**USING SPIGOTS**

and slotted tube



and handrail brackets



**USING GLASS CLAMPS**

and tube



and bars



**FULLY FRAMED**

using square or round slotted tubes



*What does the NATA stamp mean to you?*

It means that the hardware has been pre-tested and has passed all Australian Standards and Council regulations, so you will have peace of mind.

CHOOSING YOUR SPIGOTS



SQUARE



DIAMOND



ROUND

---

CHOOSING YOUR STANDOFFS



50MM DIA.



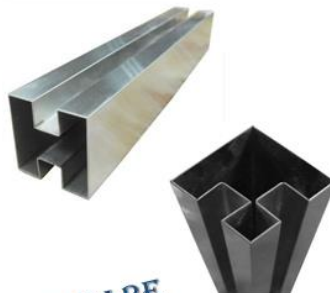
38MM DIA.

---

CHOOSING YOUR FULLY FRAMED SHAPE

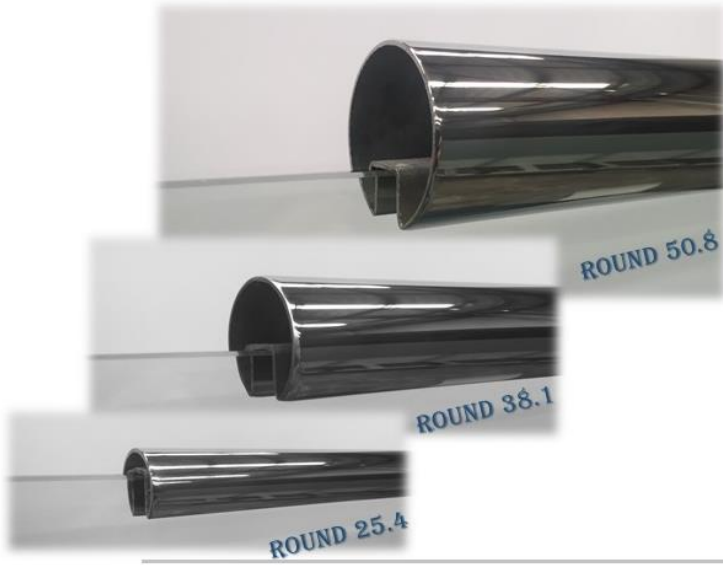


ROUND

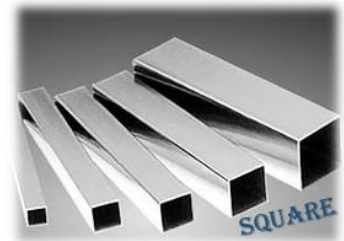


SQUARE

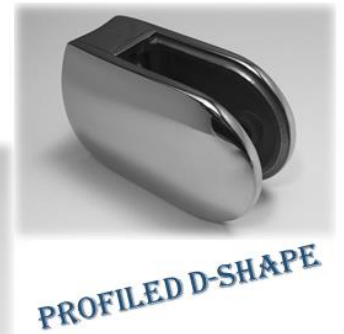
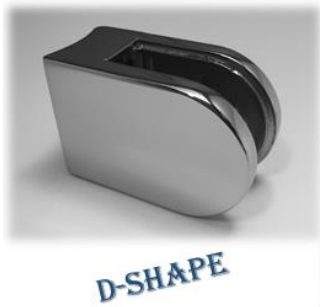
## CHOOSING YOUR SLOTTED TOP RAIL



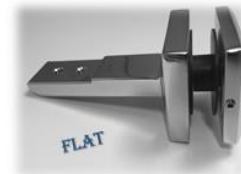
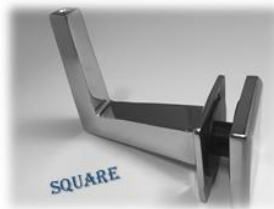
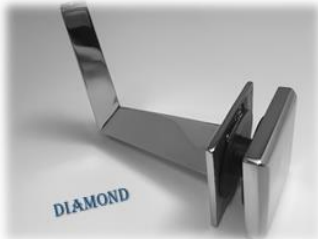
## CHOOSING YOUR HANDRAIL



## CHOOSING YOUR GLASS CLAMPS



## CHOOSING YOUR HANDRAIL BRACKETS



In a word: *Balustrading* and of course, everything that goes with it.

So what is required to install a balustrade successfully?

Planning is everything and correct planning will ensure you have the right products and all the tools for the job from the beginning. Avoid nasty surprises by knowing exactly what you want, need and envision for your project before you purchase the materials and the result will be successful.

Metforce works with you to plan and design your balustrading, advising you of all the extras and tricks of the trade. We have an eye for design and match your intended environment with the best products, both in quality, longevity and aesthetics. We have been in the business of beautiful environments for 7 years in Australia and despite the tough competitive market, Metforce and our partners have remained the preferred supplier, installer and service contact for many builders, architects and Installers.