



# GLASS POOL FENCING PRODUCT BROCHURE

Version 4 June 2015



## **METFORCE**

[www.metforce.com.au](http://www.metforce.com.au) | [sales@metforce.com.au](mailto:sales@metforce.com.au) | 1300 4 METFORCE

# CONTENTS

<b>SECTION 1:</b> About us	Page 2
<b>SECTION 2:</b> Frameless pool fencing	
Glass	Page 3
Hardware	Page 4 & 5
Check list	Page 6
<b>SECTION 3:</b> Semi-frameless pool fencing	
Glass	Page 7
Posts	Page 8
Hardware	Page 9
Check list	Page 10
<b>SECTION 4:</b> Useful information	Page 11
Pool fence planner	Page 12

**Disclaimer:**

- METFORCE assumes no risk and shall not be subject to any liability for any indirect, special, incidental, or consequential damages or for any loss of profits sustained by buyers or any party dealing with buyers in connection with the information contained in this report or resulting from the use or application of any of the recommendations contained in this report.
- The buyer is ultimately responsible for making all decisions and applying the appropriate technology based on good engineering practices.
- METFORCE also do not assume the accuracy of the below data in terms of specification.
- E&OE. All the products featured in this brochure were available at the time of publication.
- METFORCE reserves the right to add or remove products as they see fit, without prior notification.

As Australia's leading stockist of balustrade and pool fencing products, Metforce provides competitive pricing, guaranteed quality and service with care.

All our frameless glass pool fencing is compliant with all council regulations and Australian standards AS/NZS1926.1: Safety barriers for swimming pools.

All our glass is 12mm thick toughened safety glass and is manufactured to Australian standards with all the right stamps and accreditations.

All our stainless steel fittings are produced from 316 Marine Grade stainless steel, or better (such as Duplex grade 2205), and carry a compliance and quality certification by NATA.

We also understand that forward planning, correct installation, maintenance & care and having the right tools for the job are as vital as the product itself. This is why we provide assistance and advice in the planning and specification of a pool fence, step by step instructions if you are an avid DIY'er and tips on how to care for your new investment.

We deliver (please enquire about delivery fees based on your location) and accept all major credit cards which makes dealing with us a pleasure.



**METFORCE**

# 1 | ABOUT US



## **METFORCE**

We recognise that the stainless steel industry is unlike any other and is not for the faint-hearted or the unprepared. We understand to make a project successful, you need good quality materials at reasonable prices, you need to partner with suppliers who understand what it takes to make a project successful and share in your passion for perfection.

Metforce Australia prides itself on being that partner. As an importer and stockist of stainless steel and glass, supplying the handrail, balustrading and pool fencing industries, work with you to ensure that the end product is the best quality now and in the future. This is also why all critical items are NATA certified.

All our spigots come with NATA (National Association of Testing Authorities) accredited engineering certificates and all critical components such as brackets, slotted tubes and standoffs, have been certified too. Regular in-house quality checks have marked us being the only importer performing 'salt spray testing' on all stainless steel wire ropes to ISO9227 criteria.

All our wire ropes, fittings and tubes will comply with Australian standards 1170.0 / 1170.1 / 1170.2 / 1926.1 and 1926.2 codes and all our glass is to Australian standards AS/NZS2208, while all our balustrade glass is heat soaked.

Our commitment to product longevity, customer satisfaction and timeous delivery with an eye on the bottom line, has seen Metforce grow from strength to strength over the past 7 years and are proud to be the preferred supplier to some of Australia's top engineering and construction firms.

Our branches in Perth, Sydney and Adelaide ensure accessibility to our warehouses and knowledgeable sales staff. Contact us on our share call number: **1300 4 METFORCE (638 367 23)** or at one of our regional warehouses:

### **Perth**

86 Furniss Road  
Landsdale, WA 6065  
Phone: 08 9302 3686  
Facsimile: 08 9200 5673

### **Sydney**

56 Bay Road  
Taren Point 2229, NSW  
Phone: 02 9524 2003  
Facsimile: 02 8072 1303

### **Adelaide**

8-16 Hocking Street  
Brompton, SA, 5007  
Phone: 1300 4 METFORCE  
Facsimile: 08 9200 5673



Top: An exquisite example of a pool fence and matching balustrading in a new home development.

Bottom: Our warehouses hold a wide range of products to ensure we always have stock and deliver on time.

## 2 | GLASS: FRAMELESS

Prices exclude GST

- 12mm thick toughened safety glass manufactured to Australian standards, stamped and accredited.
- All panels are 1.2m high.
- All glass is clear and manufactured from the best raw materials.
- Our glass is guaranteed to have *no defects*.



### GLASS PANELS

Full range of panels from 200mm to 2m wide.



### HINGE PANELS

Full range of panels from 1m to 1.8m wide.



### GLASS GATES

Full range of panels from 800mm, 850mm or 900mm widths.



**METFORCE**

## 2 | HARDWARE: FRAMELESS

### SPIGOTS / CLAMPS

for deck mounting or core drilling into concrete.  
Available in square, round or diamond shapes.  
Produced from a Duplex Grade 2205.

### CERTIFICATION

All spigots and clamps are certified by NATA to AS/NZS1926.1 (pool fencing) and AS/NZS1170 (balustrading). These certificates are available on our website.

It is vital that you ask for a NATA certificate. The Councils may require certification to approve the fence, therefore cheap imitation products are not recommended as the Council may not grant the necessary approvals. More information about the legalities attached to the installation of a pool fence may be found on our website. (Building Commission\_Pool Fence regulations.pdf)



Square shaped spigot



Round shaped spigot



Diamond shaped spigot

### ASSURANCE OF QUALITY

All our spigots and clamps are guaranteed to have no defeats and come with a lifetime warranty.

### FYI

Duplex Grade 2205 is better quality than the standard 316 grade for this application. Our Duplex Grade is certified on Nitrogen, ensuring correct casting procedure.

### QUICK TIP

Spigots should always grip minimum 10% of the glass, so double check that you are ordering the right quality. If your glass is 1200mm high, the slot in the spigot should be 120mm deep.

**METFORCE**

## 2 | HARDWARE: FRAMELESS

### HINGES / LATCHES

for wall / post / glass fixing.  
Produced from a mirror polished Marine Grade 316.

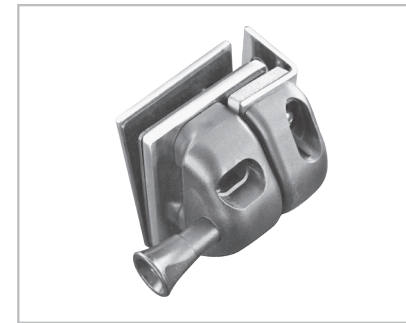
### CERTIFICATION

Our hinges and latches are all certified and guaranteed. All certificates are available on our website.

We urge you to be aware of cheap hinges that do not come with the proper certifications, these could be illegal. They can most commonly be identified as not having 'cone' ends.

### ASSURANCE OF QUALITY

All our hinges and latches are guaranteed to have no defeats and come with a Metforce warranty.



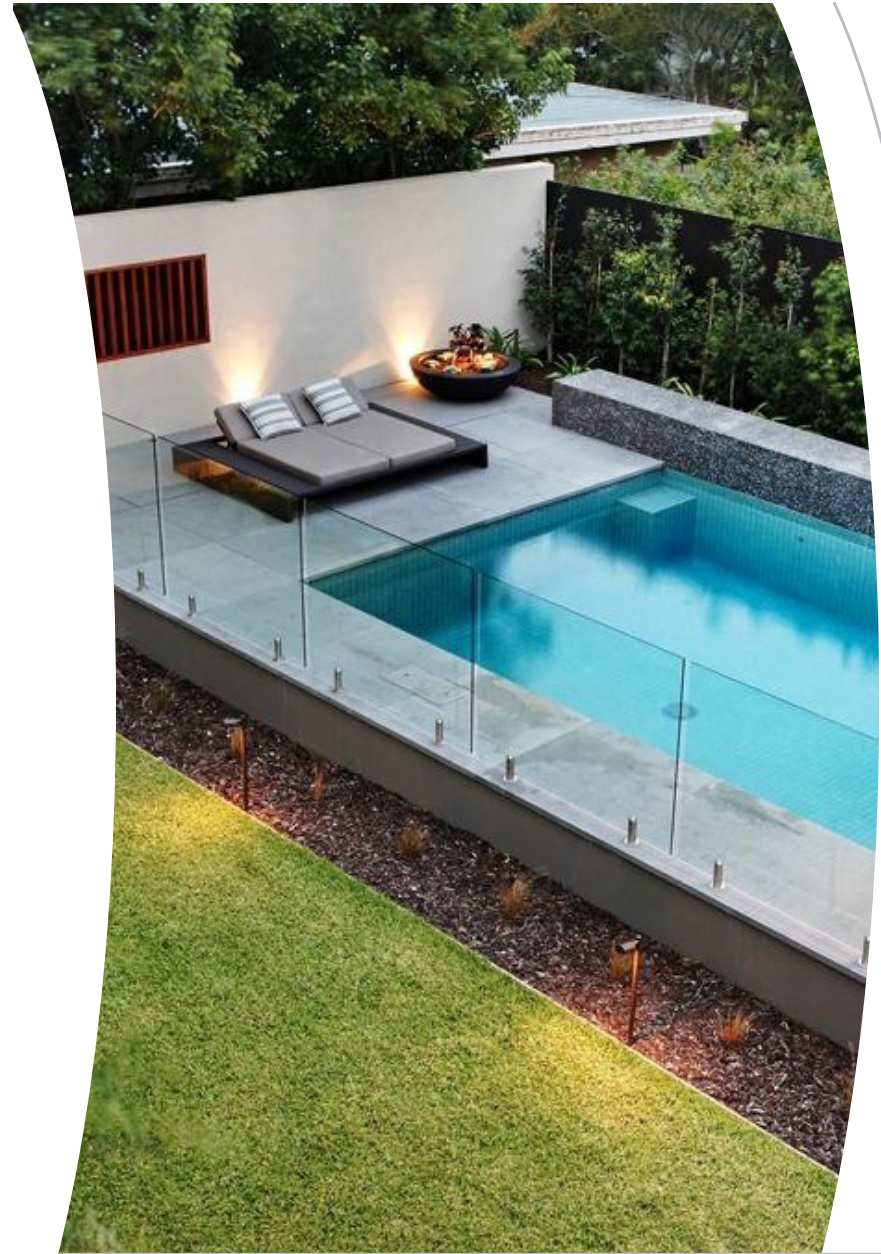
**METFORCE**

## 2 | CHECK LIST: FRAMELESS

Here is a check list of things you may need for the installation of your frameless pool fence (DIY only):

- Core drills (to drill holes into the concrete)
- Core drill bits
- Dyna Bolts (for deck mounting the spigots)
- Side mounting brackets (if fixing to decking or stairs)
- Installation brackets (to hold the glass while the grout sets)
- Fast drying grout
- Special glass panels for steps, etc.
- Special glass coatings
- Special connectors for those awkward areas
- Extended core drill bits for limestone installation

Each installation is unique and may require different things, so speak to one of our sales consultants about the best check list for your installation, or call us for a free measure and quote.



**METFORCE**

## 3 | GLASS: SEMI-FRAMELESS

Prices exclude GST

- 12mm thick toughened safety glass manufactured to Australian standards, stamped and accredited.
- All panels are 1.2m high.
- All glass is clear and manufactured from the best raw materials.
- Our glass is guaranteed to have *no defects*.
- All posts are marine grade 316 and come in single slot, double slot and corner slot.
- We have the full range of fittings to suit, such as base plates, end caps, etc.

### ✓ GLASS PANELS

Full range of panels from 200mm to 2m wide.

### ✓ SLOTTED TUBE POSTS

### ✓ GLASS GATES

Full range of panels from 800mm, 850mm or 900mm widths.



**METFORCE**

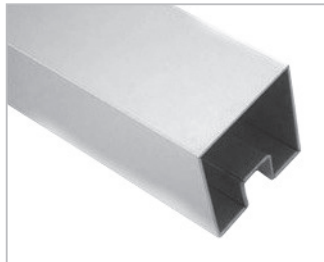


## 3 | HARDWARE: SEMI-FRAMELESS

### POSTS



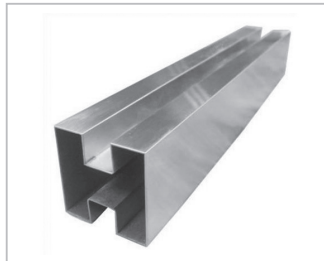
**ROUND SLOT**  
Single slot for the ends



**SQUARE SLOT**  
Single slot for the ends



**ROUND SLOT**  
Double slot for the middle



**SQUARE SLOT**  
Double slot for the middle



**ROUND SLOT**  
Corner slot for a corner



**SQUARE SLOT**  
Corner slot for a corner

### CERTIFICATION

All our slotted tubes come with manufacturing certificates of compliance and are fully guaranteed to be Marine Grade 316.

### INSTALLATION

In the case of a DIY installation of a semi-frameless pool fence, it is critical that you speak to us regarding:

- the best ways to fix your posts,
- installation of glass,
- correct PVC to use
- correct fittings to use.

### ASSURANCE OF QUALITY

All our tubes and fittings are guaranteed to have no defeats and come with the standard warranty.

**METFORCE**

## 4 | HARDWARE: SEMI-FRAMELESS

### HINGES / LATCHES

for wall / post / glass fixing.  
Produced from a mirror polished Marine Grade 316.

### CERTIFICATION

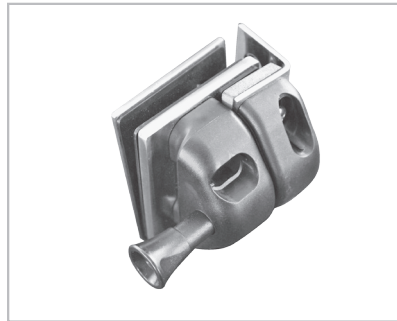
Our hinges and latches are all certified and guaranteed. All certificates are available on our website.

We urge you to be aware of cheap hinges that do not come with the proper certifications, these could be illegal. They can most commonly be identified as not having 'cone' ends.

### ASSURANCE OF QUALITY

All our hinges and latches are guaranteed to have no defeats and come with a Metforce warranty.

If latching to a square post



If latching to a round post



If hinging off a square post



If hinging off a round post



**METFORCE**

### 3 | CHECK LIST: SEMI-FRAMELESS

Here is a check list of things you may need for the installation of your semi-frameless pool fence (DIY only):

- Core drills (to drill holes into the concrete)
- Core drill bits
- Dyna Bolts (for deck mounting the posts)
- Base plates and covers if stalling on a deck
- Side mounting brackets (if fixing to decking or stairs)
- Installation brackets (to hold the glass while the grout sets)
- Fast drying grout
- Special glass panels for steps, etc.
- Special glass coatings
- Special connectors for those awkward areas
- End caps and other fittings
- PVC channels for the tubes



**METFORCE**

## 5 | INFORMATION

### 1. Why are Metforce spigots (pool fence pegs) guaranteed and amongst the highest quality in the world?

#### Preparation and Production:

- Metforce spigots are produced in 4 approved casting factories. Numerous factories are required due to capacity vs. volume ordered vs. continuous supply.
- These 4 factories are the only factories we know of in China with vacuum furnaces allowing for Nitrogen controlled environments to produce certified duplex stainless steels.
- Each factory is given 2 aluminium moulds per design, all produced by the same tool maker.
- The designs are all made to, not only comply with Australian standards, but also engineering standards.
- All grub screws are free issued by Metforce to ensure the correct grade is used.
- All PVC and rubber gaskets are free issued ensuring the correct UV grading.
- All castings are made of Duplex 2205 and melted in vacuum furnaces allowing for the correct environment.
- All wax is filtered to a specified purity.

#### Polishing:

- A total of 9 polishing companies are used to polish the spigots up to the superior mirror finish.
- The first stages of polishing are done automatically to ensure flatness.
- Tolerances are managed throughout the polishing process ensuring the correct dimensions and shape.

#### Inspection and Testing:

- Every spigot is inspected for gap tolerance (to ensure it fits onto 12mm glass)

- Every spigot is inspected by our own staff for finish and shape before it leaves China.
- Each batch is tested using our own hand-held spectrometer for correct chemical composition.
- Every year Metforce carries out full testing so that an engineer's certificate can be provided to Australian standards.

#### What does all this mean for you?

- We guarantee:
  - All our spigots are the correct grade, certified as grade 2205 and nitrogen tested.
  - All grub screws are the correct grade.
  - All PVC and rubbers are UV protected.
  - All our spigots conform to Australian standards.
- Metforce spigots are not light-weight and we do not cheat on strength.
- Metforce spigots all grip the glass with 10%.  
(We believe this to be an Engineering standard. Some Shires have already made this regulation and within time, other Shires will insist on this too.)

#### What to test for when deciding which spigot to buy:

- Do they grip 10% of the glass? You may run the risk of an unexpected call-out to replace them if the regulations change.
- Are you sure that the grub screws are the correct grade?
- Check the splaying (the amount the spigot opens up when tightened)
- Are the PVC and rubber UV protected?
- Have you checked the spigot warranty?
- Ask for an engineer's certificate to Australian Standards.
- Feel the weight difference.

*There are many factors that influence price vs. quality. Metforce prides itself on delivering the best quality at the best value for money. We consider the certifications and authoritative approvals highlighting the best quality to be of the utmost importance and you will too once you have experienced our products and seen them in action.*

### 2. What is toughened glass?

Toughened or tempered glass is a type of safety glass processed by controlled thermal or chemical treatments to increase its strength compared with normal glass.

Tempering creates imbalanced internal stresses which cause the glass, when broken, to crumble into small granular chunks instead of splintering into jagged shards. The granular chunks are less likely to cause injury.

As a result of its safety and strength, tempered glass is used in a variety of demanding applications, including passenger vehicle windows, shower doors, architectural glass doors and tables, refrigerator trays, as a component of bulletproof glass, for diving masks, and various types of plates and cookware.

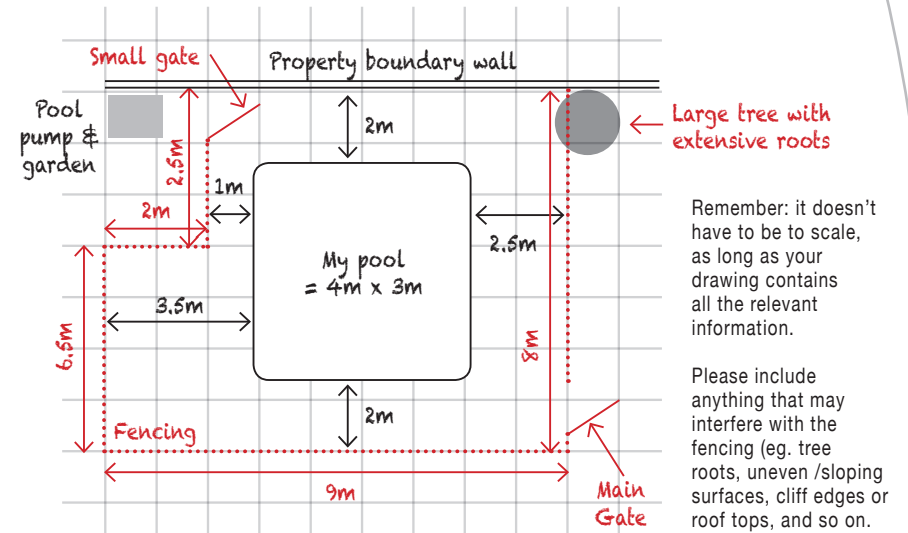
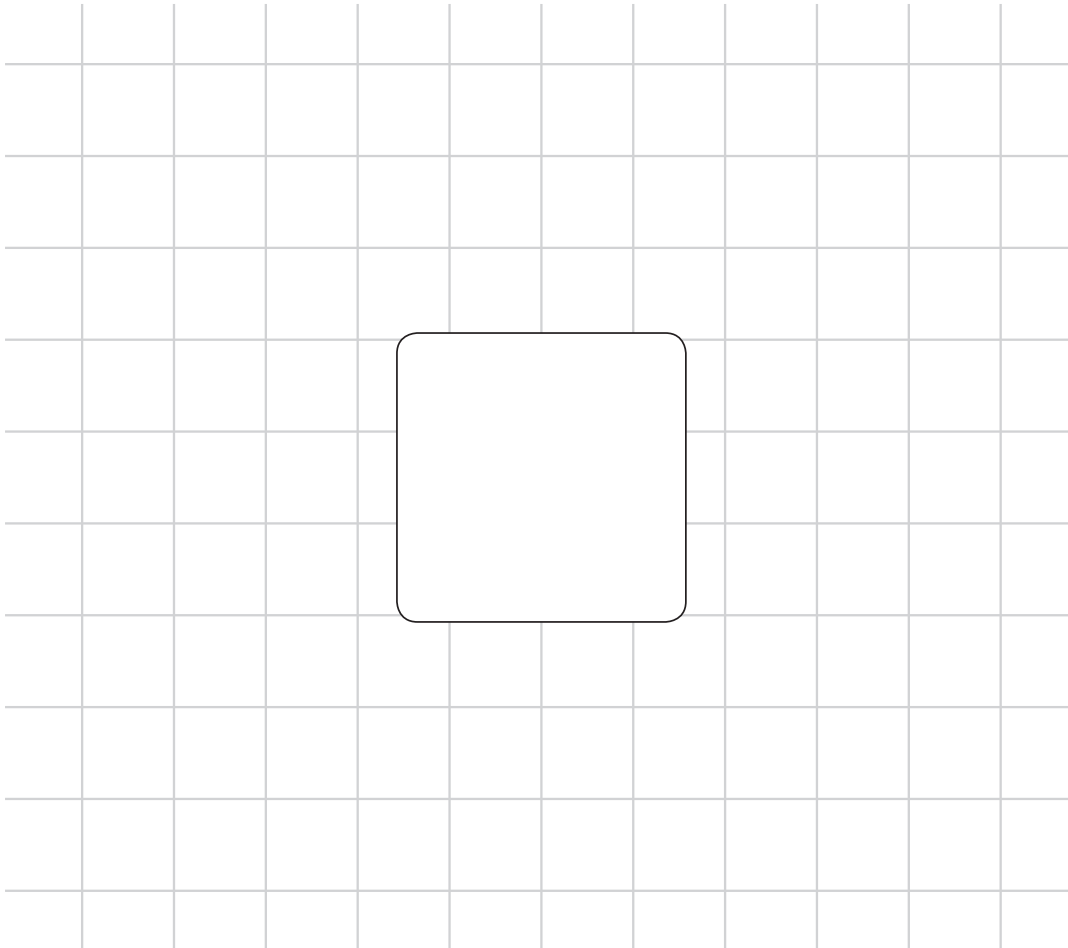
*Toughened glass is physically and thermally stronger than regular glass.*

For more on toughened glass, please see full document available on our website.

**METFORCE**

# 5 | POOL FENCE PLANNER

Correct planning is vital for an accurate quote. Use the diagram below to show us your pool setup and where you want the fencing and gates. For example:



**Latches fixing to:**

- Wall
- Post
- Glass

**Posts:**

- Round
- Square

**Hinges:**

- Spring
- Hydraulic

**Spigot type:**

- Round
- Square
- Diamond

**Extras:**

- Hes Grout (Bostik)
- Any stairs?
- Enduro Coating
- Delivery
- Other extras?  
Please list them alongside.

**Fixing:**

- M20 bolt
- Core drill 63mm
- Base plate for deck mounting

---



---



---



---



---

Sent your completed diagram to us for a quote on email: [sales@metforce.com.au](mailto:sales@metforce.com.au) or fax: [08 9200 5673](tel:0892005673), you can also download full-sized copies from our website.

**METFORCE**



We supply the most comprehensive range of  
**STAINLESS STEEL PRODUCTS**  
for use with Balustrades, Pool Fencing, Glass and Wire Ropes.



**METFORCE**

Visit our website: [www.metforce.com.au](http://www.metforce.com.au)

Email: [sales@metforce.com.au](mailto:sales@metforce.com.au)

Or call: 1300 4 METFORCE

**MORE GREAT PRODUCTS IN THE FOLLOWING BROCHURES:**  
TUBES & FITTINGS | GLASS & FITTINGS  
WIRE ROPE & ACCESSORIES | POOL FENCING